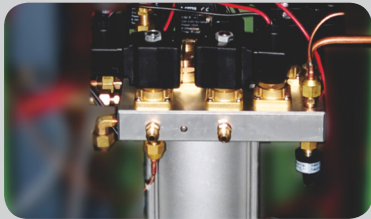


# A/C Service Machine



Modularization design



Double fans



Friendly interface  
Run by hot key



Oil injection & drain  
controlled by switch

**Recovery. Vacuum. Recharge. Oil Injection.**





**LCH-A943F A/C Service Machine** is the newest addition to the quality Launcher line of products. It features a fast recovery speed for refrigerant gas (R134-A & R12) or liquid and includes alarm and warning information. It is easy to operate with a friendly interface and is stable and reliable. The LCH-A943F utilizes special seals and includes a specially designed oil separator with patented technology.

## Function

- | Automatic flushing
- | Automatic recovering/recycling
- | Automatic/manual used oil drain
- | Automatic vacuum
- | Automatic/manual new oil injection
- | Automatic recharging with load cell
- | Manual recharging with jar via the auxiliary port
- | Maintenance message display
- | Maintenance procedures
- | Data Printing
- | Database
- | Electric scale calibration
- | Parameter setting

## Features

- | Cleans the pipeline of A/C system on-vehicle
- | Includes a variety of cleaning modes
- | Equipped with large-size observing window with LED backlight
- | Pressure gauges are installed vertically
- | Special designed oil separator with patented technology
- | Friendly interface
- | Auxiliary port
- | R134-A & R12 refrigerant gas

## Specifications

- | Power supply: AC220V~50/60Hz or AC 100V~60Hz
- | Vacuum pump: 4.5CFM, 5Pa
- | Compressor: 1HP, 12cc
- | Load cell precision(tank):  $\pm 10g$
- | Load cell precision(bottle):  $\pm 5g$
- | Tank capacity: 12L
- | Work max. pressure: 17.5bar
- | LED display: 240\*128

Unit#C3, 1115 Crestlawn Drive, Mississauga, Ontario, Canada, L4W 1A7  
T: 905-602-0226 C: 647-921-0554  
www.canadaautosolutions.com



Designed in Canada

Meets OEM Standard of North American Domestic, European and Asian Cars

Made in China